



*Zenith and You - The Perfect Blend*

# Zenifer-PVD

*The Wonder Mesh*

Continuous Oxidisation Machine





# Zenifer-PVD

*A unique designed continuous fermenting machine - having an individual Stainless Steel Hopper connected with S. S. Tapered duct for the humid air provided from the mist chamber.*

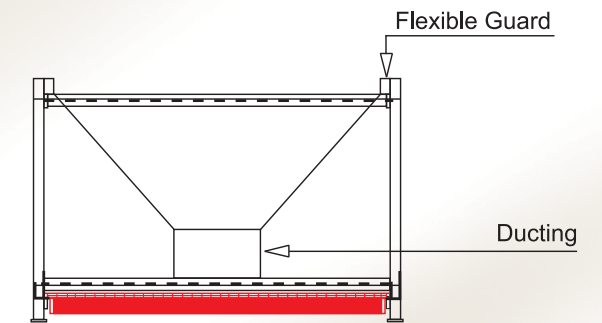
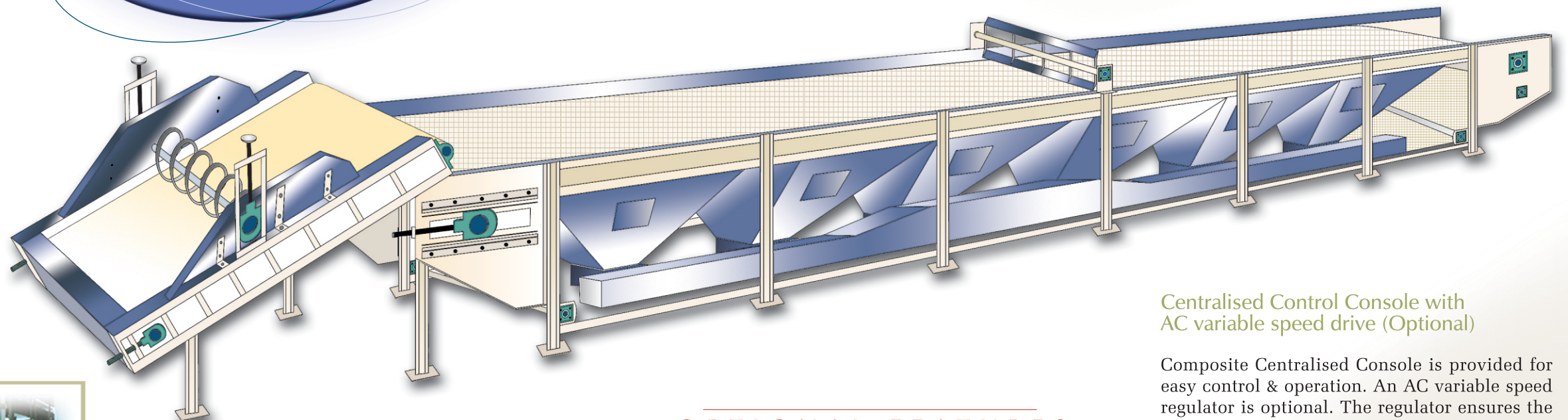
*Zenifer - PVD fermentation on is comparable with the level of floor fermentation.*

## The Wonder Mesh (PES) has got certain unique advantages:

- This mesh has got 46% open area which is about 85% - 87% more in comparison to SS-Belt and Trays which ensures uniform oxidisation.
- The wonder mesh is **available upto 8' wide** enables wider machines, shorter in length to accomodate in the space constrained factories.
- To control the movement of **Wonder Mesh**, Rubberised Conveyor Rollers, specially designed Idler and S.S. Plates are provided.

## Full Width Feed Conveyor

Suitable Full Width PVC Feed Conveyor with synchronised speed arrangement and spiral spreader is provided to Uniform Controlled feeding of Dhool Mal (*Ensuring Better Quality of Tea*).



## Air Distribution

S.S. aerodynamically designed plenum chamber with suitable airduct & individual dampers facilitates continuous uniform distribution of humidified air throughout the effective area of the machine to ensure consistently producing good quality tea.

## Design

Neat as well as sturdy. The tea bed is uniformly and evenly maintained. Low height ensures better inspection & supervision. No accumulation or spillage of tea. This machine is ideal for on line manufacturing process.

## Upturner

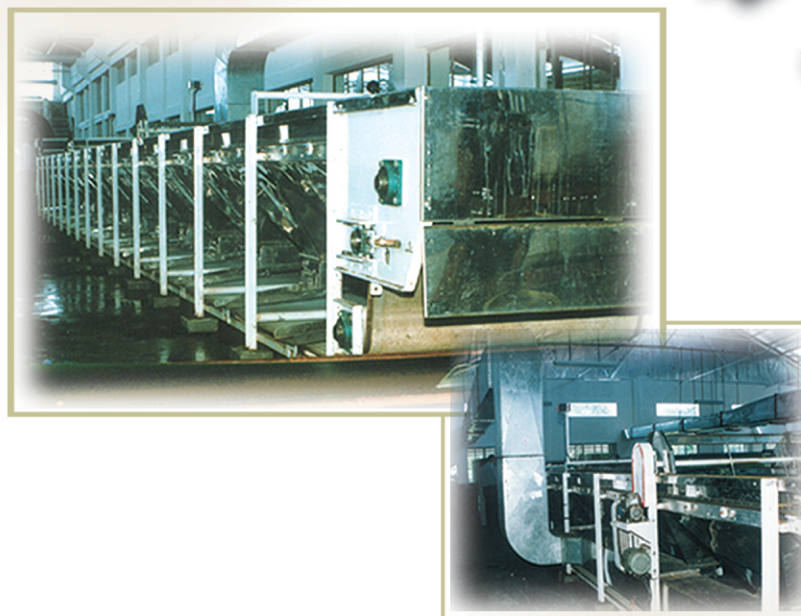
For Belts and even fermentation through out the Bed a slow speed S.S. Upturner is provided. It is specially designed to make sure the grades are not disturbed.

## Centralised Control Console with AC variable speed drive (Optional)

Composite Centralised Console is provided for easy control & operation. An AC variable speed regulator is optional. The regulator ensures the exact fermenting time and avoids the tedious job of changing the pulleys or shifting the V-Belts.

## OPTIONAL FEATURES

- **Pneumatic Auto Belt Tracking System:** The System ensures self alignment of the run of the mesh belt hance avoids damages.
- **Discharge Conveyors:** Collection conveyors at the discharge end of the machine either of twin type or standard type can be provided.
- **Ball Separator cum Ball Breaker:** This is very innovative system. Unlike the other , here only Ball Mal goes to the ball breaker. Therefore 90% - 95% mal is not subjected to breaking and additional handling. Very vital for upkeeping the qualities. This can be used under the googie or at the discharge of fermenting machine.



## Controlled Humidity & Temperature

For the supply of fresh humid air suitable Humidification arrangement is incorporated with the machine. This ensures adequate Hygrometric difference & supply of air for better Oxidation.

# Zenifer-PVD

## Technical Specifications (6' Wide)

Dimensions	5M (mm)	6M (mm)	7M(mm)	8M (mm)
Overall Length W/O feed Conveyor	11505	13410	15315	17220
Overall Length with Feed Conveyor	13791	15696	17601	19506
Overall Width <i>(with G.B. Table)</i>	2845	2845	2845	2845
Overall Height	1280	1280	1280	1280
Effective Tea Bed Length <i>(without Feed)</i>	10515	12420	14325	16230
Effective Fermenting Width	1830	1830	1830	1830
Feeding Height of Feed Conveyor	940	940	940	940
Discharge Height from Floor Level	430	430	430	430
Tea Bed Height from Floor Level	1080	1080	1080	1080
Fermenting Time Range		30 mins to 150 mins		
Capacity (Withered Leaf) kg**	910	1080	1260	1440

\*\*At 4" thickness, 50 min fermenting time & leaf conditions

## Power Requirement

Main Motor	2 HP	3 HP	3 HP	3 HP
Upturner	1 HP	1 HP	1 HP	1 HP
Feed Conveyor	1 HP	2 HP	2 HP	2 HP
Cleaner	1 HP	1 HP	1 HP	1 HP
Discharge (Optional)	1 HP	1 HP	1 HP	1 HP
Humidification Fan	5 HP	5 HP	5 HP	5 HP
Humidifiers	1 HP	1 HP	1 HP	1 HP
Cleaning System	2 HP	2 HP	2 HP	2 HP

NOTE: Due to continuous process of development the design is subject to change without notice

## ZENITH MACHINERY COMPANY

### Unit I

58, N.S. Road. Liluah (Goshala). Howrah.

### Unit II

P -199, Benaras Road. Belgachia, Howrah

Ph. (9133) 2651 6515, Fax - 9133 22426556

Email - Zenith@cal.vsnl.net.in